

PROFESSIONALS WORKING FOR YOU

1976
CABELL COUNTY
SHERIFF'S DEPT.
ANNUAL REPORT

TOTAL COMPLAINTS
REPORTED :

T
H
O
U
S
A
N
D

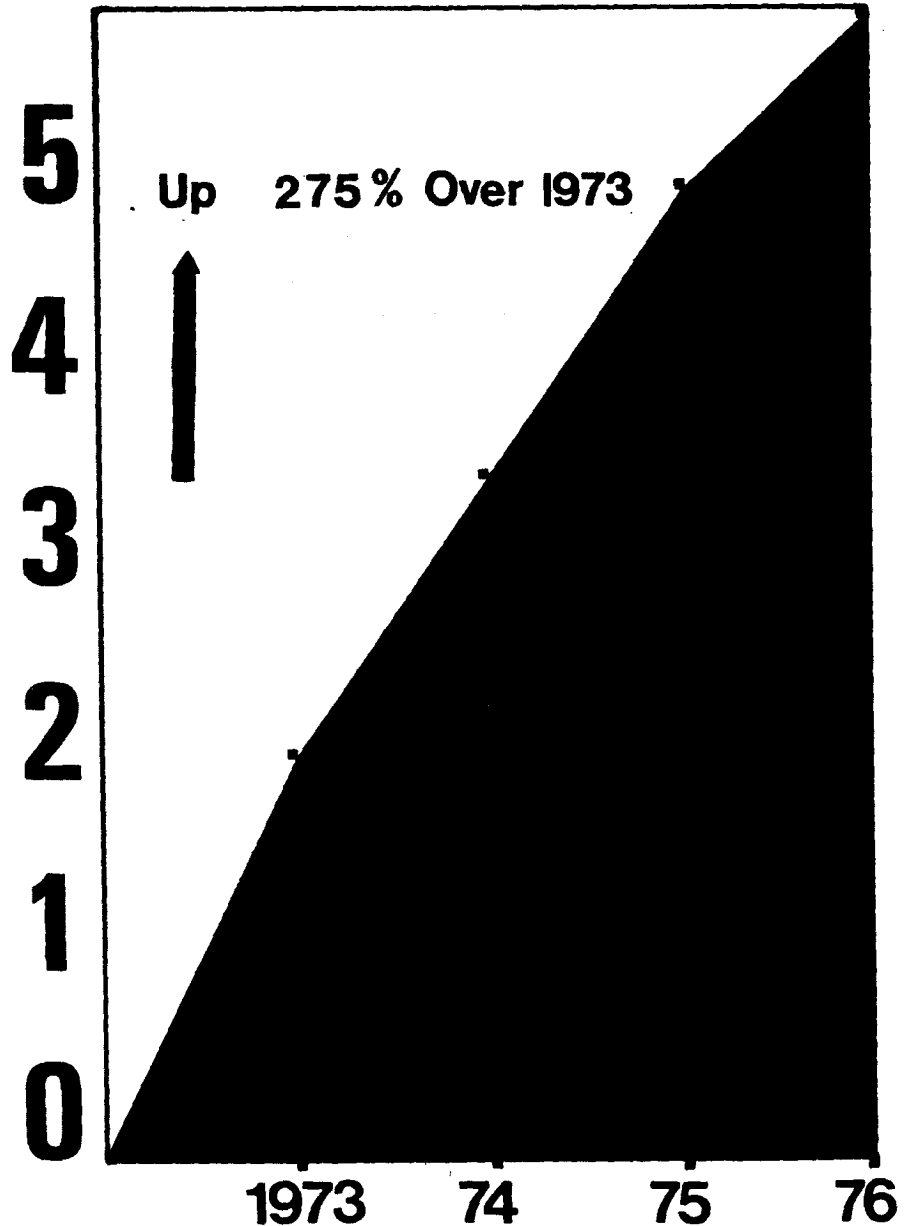
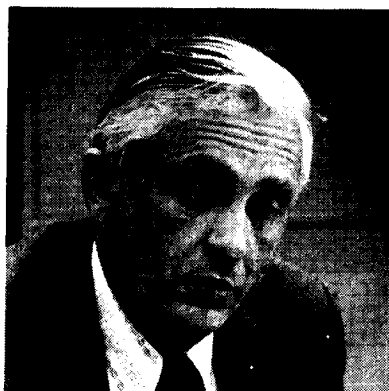


TABLE OF CONTENTS

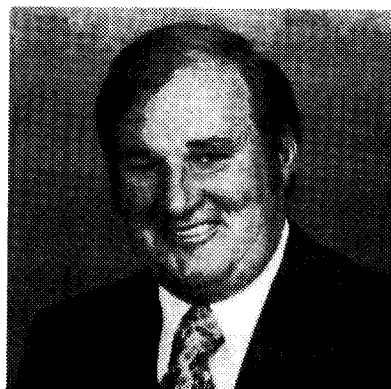
1	LETTER OF TRANSMITTAL.....
2	ORGANIZATIONAL CHART.....
3	DISTRIBUTION OF PERSONNEL.....
4	BUDGET 1976-1977.....
5	BUDGET 1977-1978.....
6	LAW ENFORCEMENT DIVISION.....
7	ACCIDENT SUMMARY.....
8	BUILDING CHECKS.....
9	CRIME ACTIVITY TREND.....
10	BURGLARY.....
11	LARCENIES.....
12	ROBBERY REPORT.....
13	FELONIOUS ASSAULTS.....
14	ARRESTS.....
15	LAW ENFORCEMENT OFFICERS ASSAULTED.....
16	INVESTIGATIONS UNIT.....
17	OFFENSES BY CLASS.....
18	STOLEN PROPERTY.....
19	MOTOR VEHICLES RECOVERED.....
20	SPECIAL SERVICES DIVISION.....
21	COMMUNICATIONS.....
22	AUCTION, UNCLAIMED PROPERTY.....
23	MOTOR VEHICLE LICENSES DIVISION.....
24	COMMUNITY CONCERN.....
25	S.T.O.P.....
26	S.T.O.P.....



TED JOHNSON
PRESIDENT



BILL DUNFEE
COMMISSIONER



ROY ADAMS
COMMISSIONER



80
TED T. BARR
SHERIFF AND TREASURER



COUNTY OF CABELL

HUNTINGTON, W. VA. 25701

1 September 1977

LAW ENFORCEMENT 520-4196
SPECIAL SERVICES 523-6407
TAX DIVISION 522-7343

Mr. Ted Johnson
President
Cabell County Commission
Courthouse
Huntington, West Virginia

Dear Mr. Johnson:

The Annual Report of the Cabell County Sheriff's Department for the Year 1976 is herewith submitted to you and the citizens of our community for the purpose of outlining the various activities and accomplishments. We hope this report meets with the approval of the Commission as well as all the citizens of Cabell County.

This report reflects not only a tremendous increase in requested services by the public, but also an increase in programs developed by the Department to meet the needs of our citizenry.

With the current rise in crime rate, it is obvious there still exists a definite need for continuing our special efforts toward the area of Crime Prevention and Community Relations. Again, we would be hopeful that you and the other members of the commission will give further thought and consideration to our needs in providing the citizenry with the best police service possible.

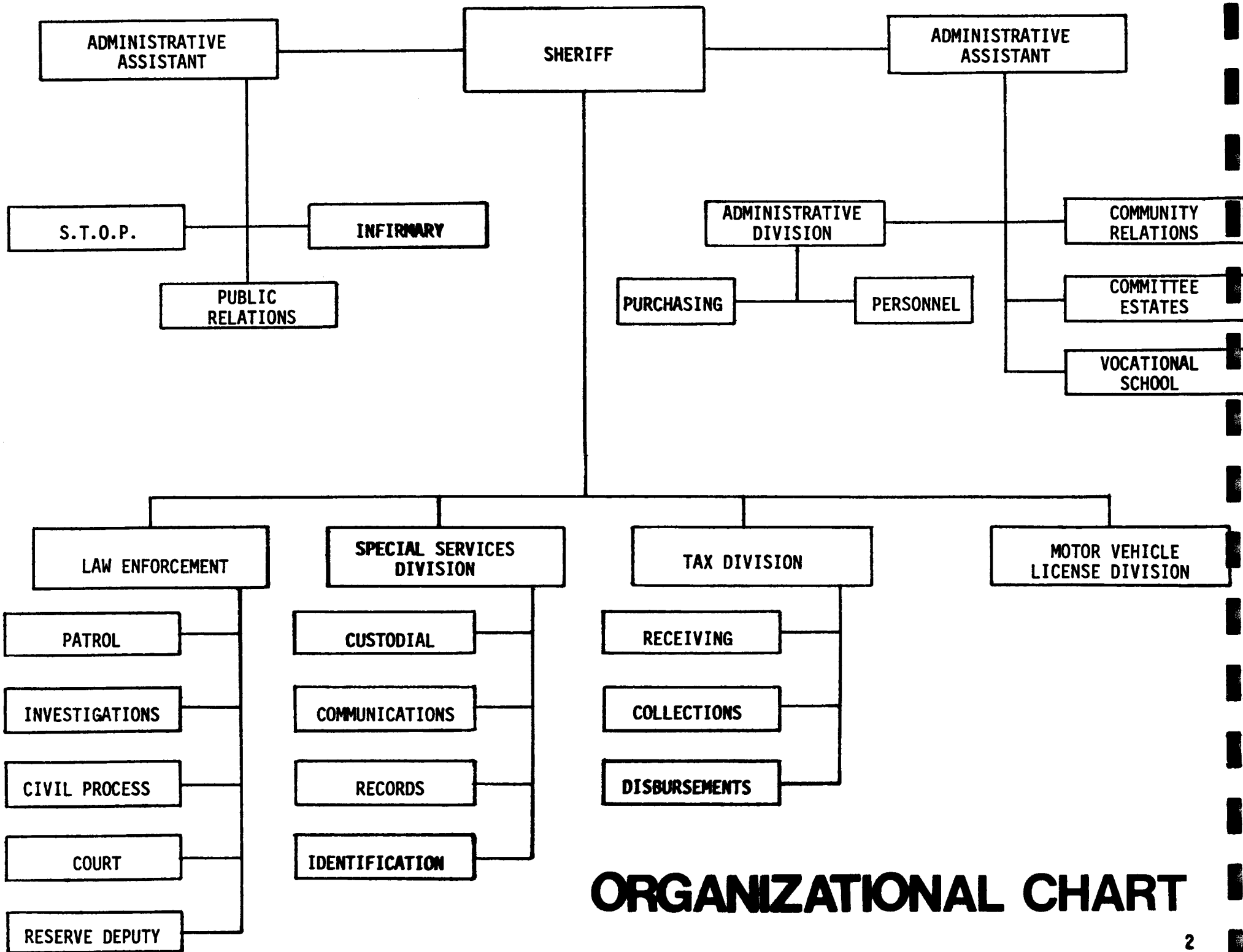
The true professionalism which has become inherit within the department will, with the continuing cooperation of the Cabell County Commission and the support of the citizens, enable us to meet the increased demand for professional law enforcement in Cabell County during the coming year.

The members of the Cabell County Sheriff's Department wish to reaffirm to the public their pledge to continue to be Public Servant #1.

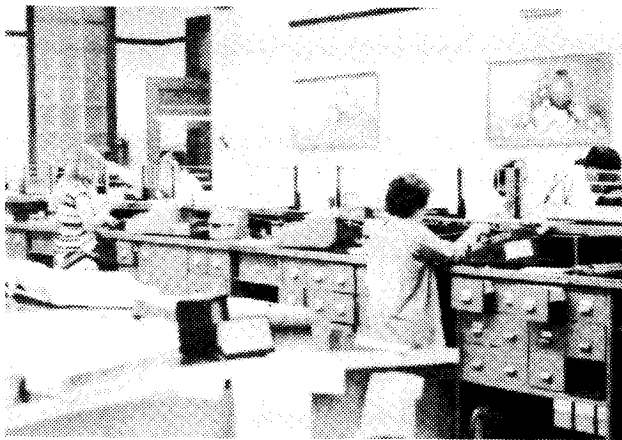
Sincerely,

Ted T. Barr
Ted T. Barr
Sheriff

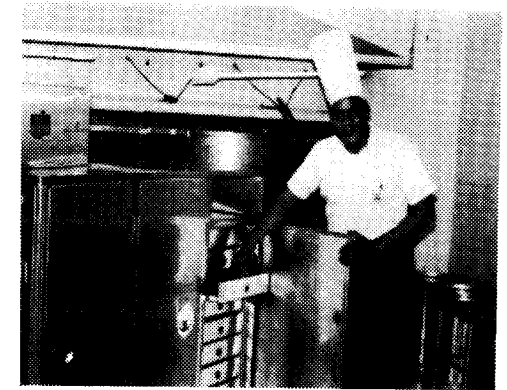
"NO LEGACY IS SO RICH AS HONESTY"



ORGANIZATIONAL CHART



DISTRIBUTION OF PERSONNEL



CABELL COUNTY SHERIFF'S DEPARTMENT

RANK	OFFICE/SHERIFF				LAW ENFORCEMENT DIVISION						SPECIAL SERVICES DIVISION						TOTALS		
	SHER OFF	ADMN DIV	TAX DIV	MVL DIV	CHF DEP	FST SHFT	SEC SHFT	THD SHFT	INVS DIV	CRTS PRCS	DIR SSD	A/B 1SFT	A/B 2SFT	A/B 3SFT	A/B RELF	COMM RELF	INFM RELF	ACT	AUTH
SHERIFF	1																	1	1
CHIEF DEP					1													1	1
DIR SSD											1							1	1
STOP CORD		1																1	1
COM REL		1																1	1
COMM EST	1																	1	1
SUPVRS			1	1		1	1	1	1	1	1	1	1	1				11	11
DEPUTIES	1					4	4	4	3	6		1	1	1	3			28	28
S T O P	3					6	6	6				2	1			1		25	25
SECRETARY	1				1													2	2
HD CASH			1															1	1
CASHIERS			3															3	3
CLERKS			3	1	1													5	5
BOOKPING			1															1	1
DISPATCH												1	1	1		2		5	5
COOKS												2						2	2
TOTALS	7	2	9	2	3	11	11	11	4	7	2	7	4	3	3	2	1	89	89

BUDGET 1976-77



A-- PERSONNEL

B-- EQUIPMENT

C-- SUPPLIES

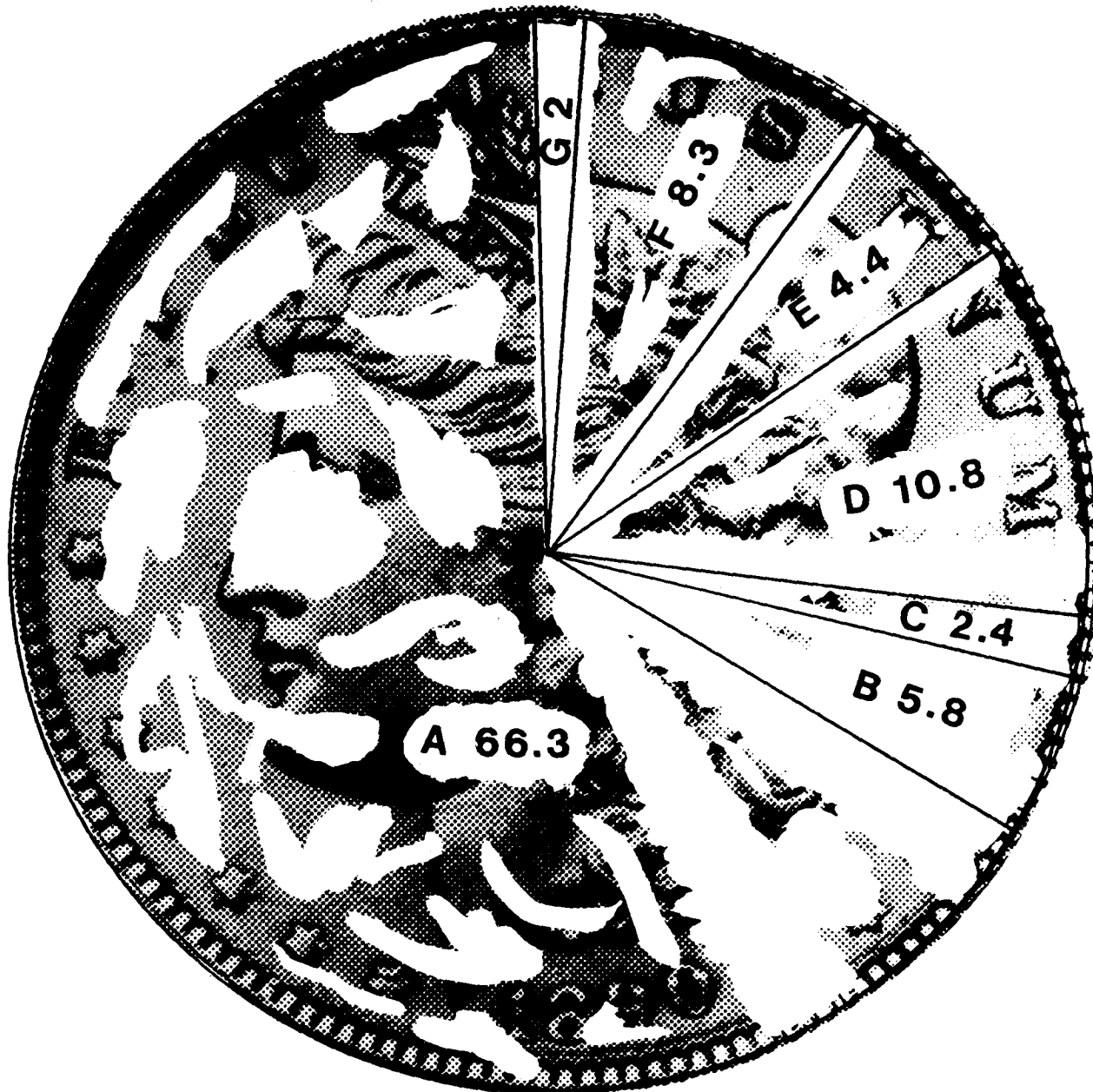
D-- MAINTENANCE REPAIR SERVICE

E-- EXPENSES

F-- JAIL FOOD

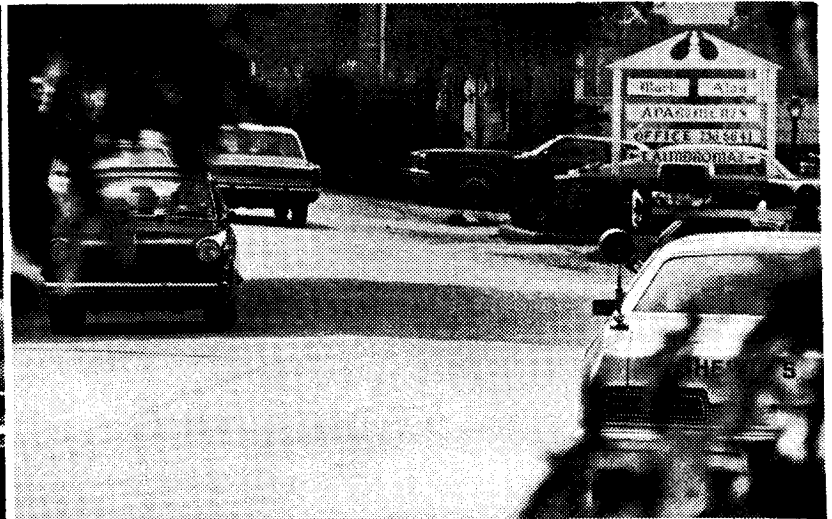
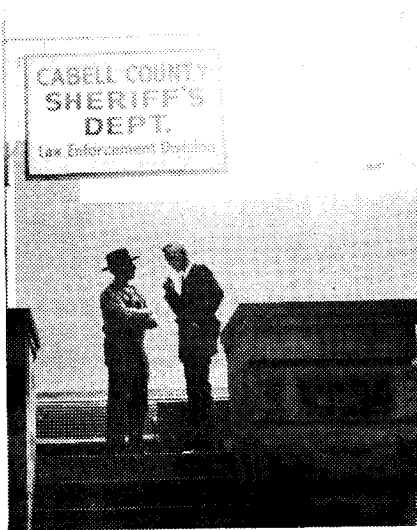
G-- FEDERAL GRANTS

PROJECTED BUDGET 1977-78



- A-- PERSONNEL
- B-- EQUIPMENT
- C -- SUPPLIES
- D-- MAINTENANCE REPAIR SERVICE
- E-- EXPENSES
- F-- JAIL FOOD
- G-- FEDERAL GRANTS

LAW ENFORCEMENT DIVISION



MILES TRAVELLED

CIVIL PROCESSES SERVED

RES. DEP. HOURS WKD.

471,067

10,031

1,894

623,992

8,378

4,317

708,820

7,768

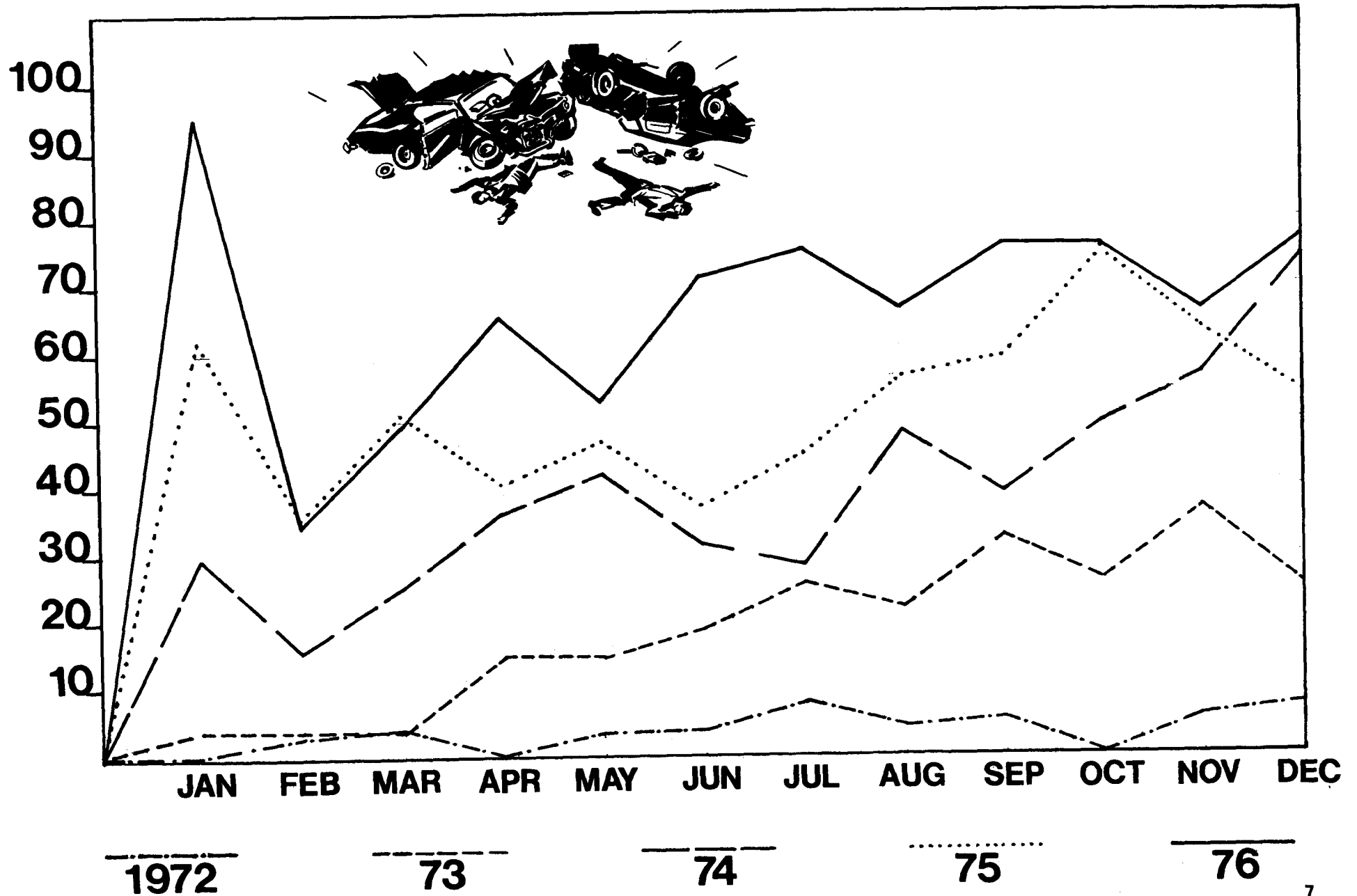
3,761

818,675

8,695

3,077

ACCIDENT SUMMARY



Your Home Is
Probably Your Single
Biggest Asset...

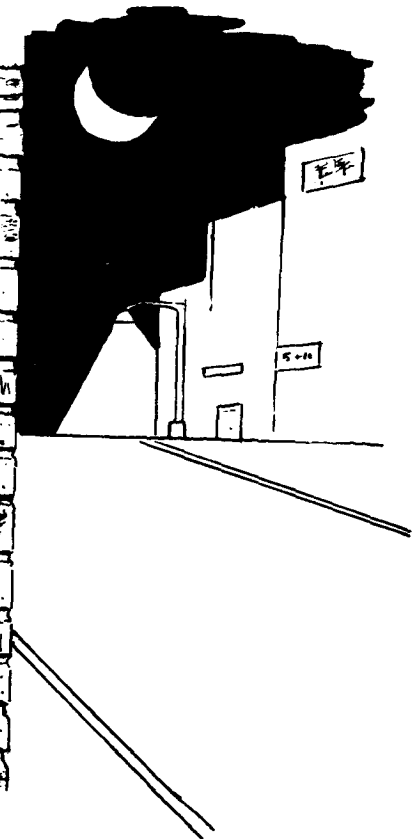
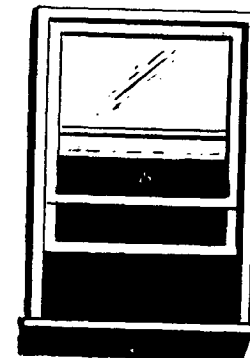
PROTECT IT!



MONTH	1973	1974	1975	1976
January		2017	4797	5869
February		1935	3939	5874
March	2	2681	2380	4815
April	3	6351	2924	5064
May	7	3065	3047	5988
June	18	3127	3369	6101
July	49	3080	3442	6903
August	34	2960	3829	7103
September	7	2464	4537	7000
October	7	3594	4126	6770
November	8	3395	4690	6097
December	15	4688	4799	5799
TOTAL	150	39,357	45,879	73,383

BUILDING CHECKS

Shop



CRIME INDEX


ACTIVITY TRENDS

1972 - 12% 1973 - 16.2% 1974 - 36% 1975 - 42% 1976 - 46%

CLASSIFICATION OF OFFENSES (PART I CLASSES) CRIMES OF VIOLENCE	OFFENSES KNOWN TO THE DEPARTMENT					CLEARED BY ARREST				
	1972	1973	1974	1975	1976	1972	1973	1974	1975	1976
1a MURDER & NONNEG. MANSLAUGHTER		1		4	8		1		1	8
2 FORCIBLE RAPE TOTAL		5	1	2	3		2			2
a RAPE BY FORCE		5	1	1	2		2			2
b ASSAULT TO RAPE - APPTMPT				1	1					
3 ROBBERY TOTAL	1	5	4	7	8				4	1
a ARMED - ANY WEAPON		3	2	4	3				2	1
b STRONG ARM - NO WEAPON	1	2	2	3	5				2	
4 AGGRAVATED ASSAULT TOTAL		34	33	40	73		17	29	33	68
a GUN		3	3	4	1		2		3	3
b KNIFE OR CUTTING INSTRUMENT		3	2	1	1		1		2	6
c OTHER DANGEROUS WEAPON		3	4	9	22				7	18
d HANDS, FIST, ETC. - AGGRAVATED		25	24	26	49		14		21	41
5 BURGLARY TOTAL	6	88	144	179	165		9	40	33	40
a FORCIBLE ENTRY	2	58	72	116	95		6		21	25
b UNLAWFUL ENTRY - NO FORCE	4	16	26	46	45		2		9	13
c ATTEMPTED FORCIBLE ENTRY		14	16	17	25		1		3	2
6 LARCENY - THEFT (EXCEPT AUTO) ^{\$50&} OVER	9	102	143	210	251		6	25	43	43
7 AUTO THEFT		6	19	16	19		1	9	10	10
CRIME INDEX TOTAL	16	241	314	458	527		36	103	124	172
1b MANSLAUGHTER BY NEGLIGENCE		1			1					1
4e OTHER ASSAULTS - NOT AGGRAVATED	3	13	47	81	69	2	11	33	68	64
6b LARCENY, UNDER \$50 IN VALUE	6	73	144	275	273	1	6	45	152	164
PART I TOTAL	25	328	505	814	870	3	53	181	344	401

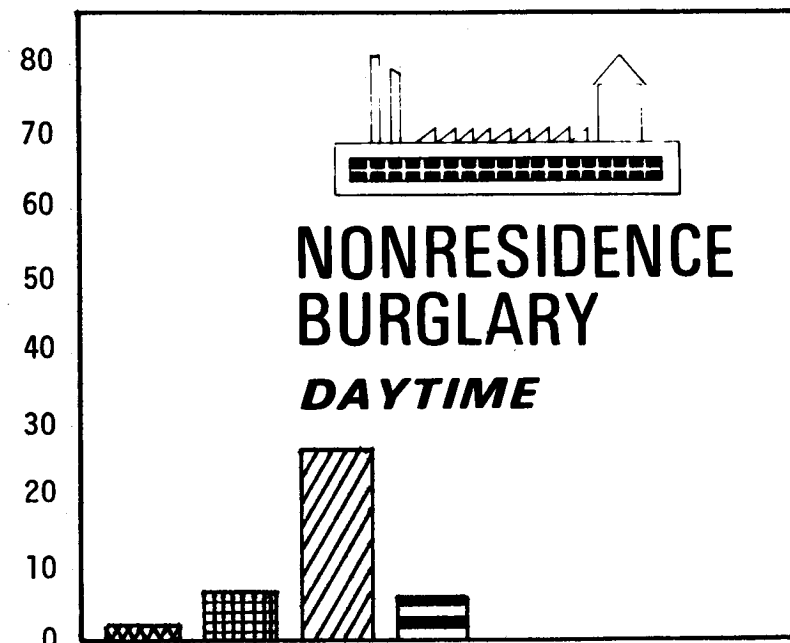
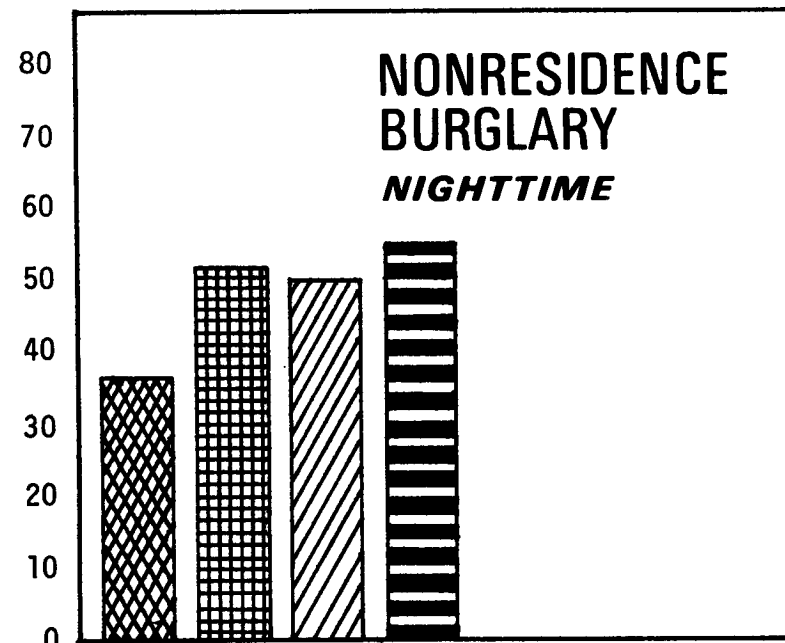
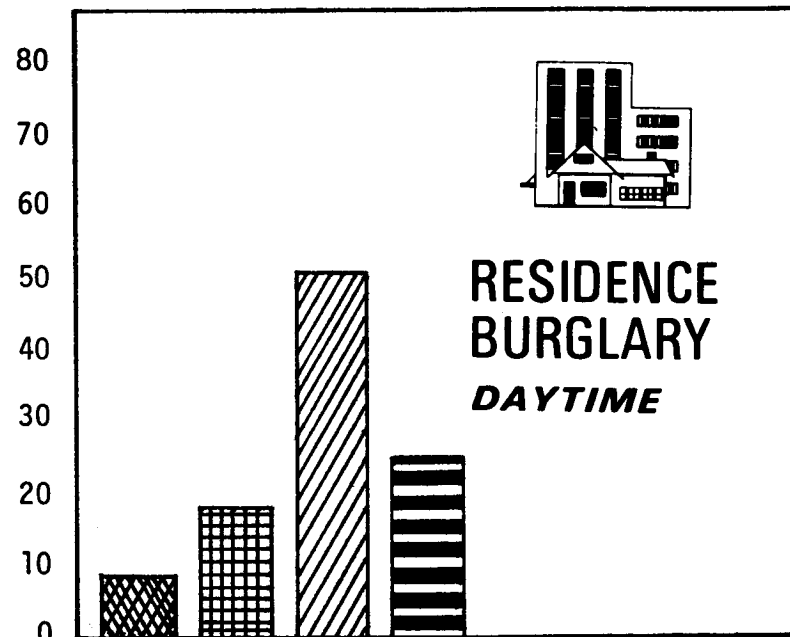
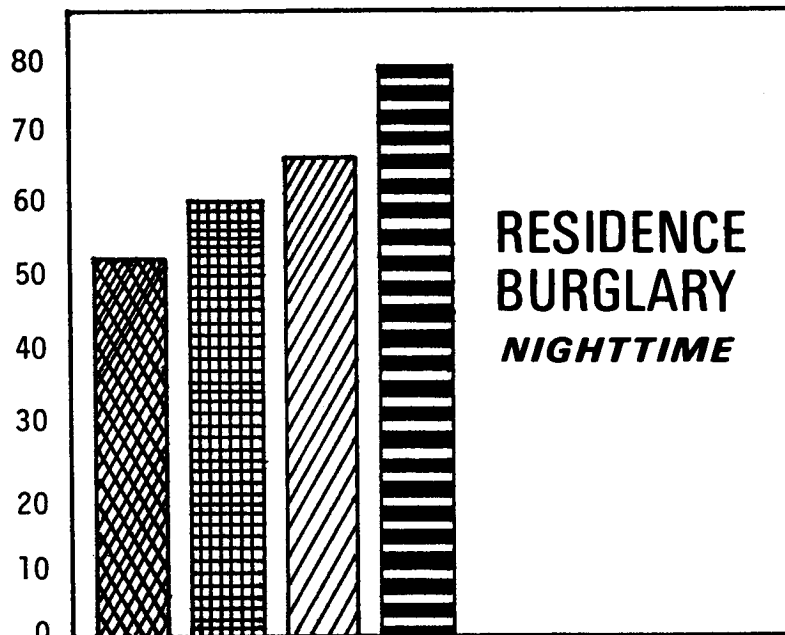
BURGLARY


1973

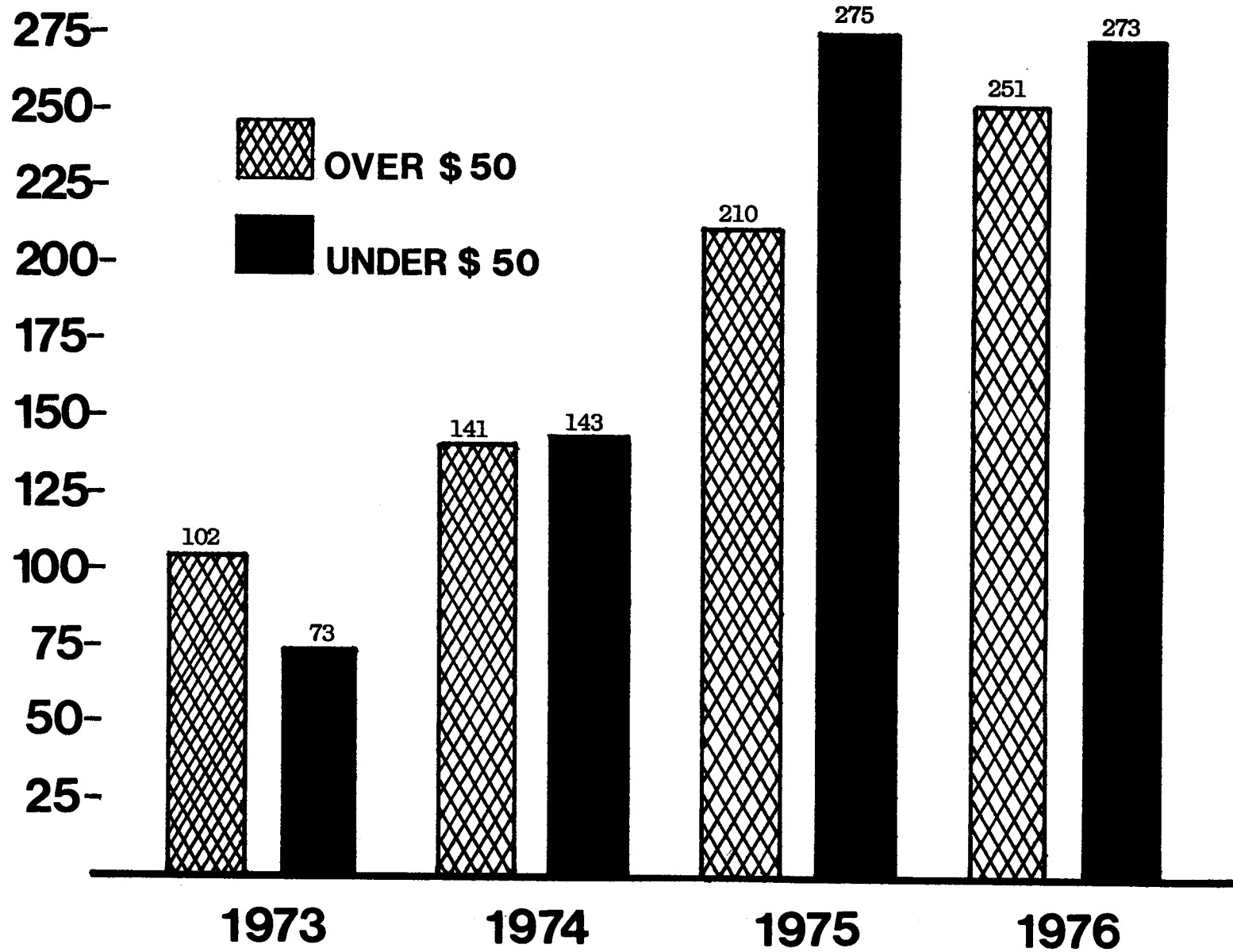

1974


1975

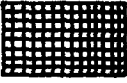







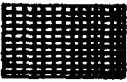



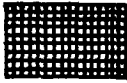


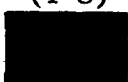

1976



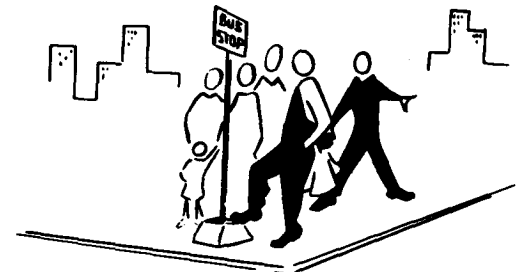
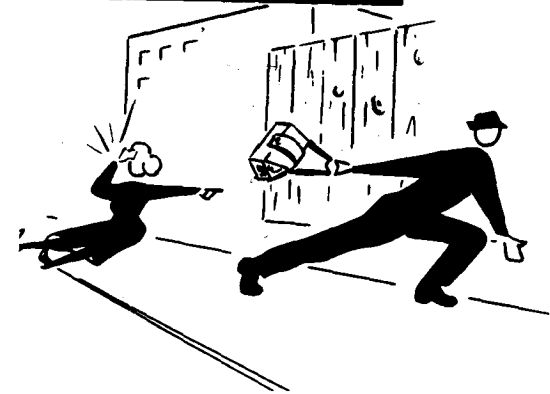
LARCENIES



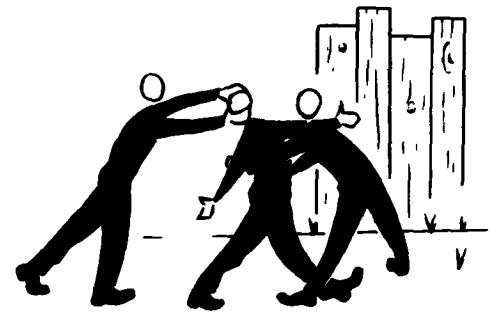
ROBBERY REPORT

	JAN	FEB	MAR	APR	TOTAL
	0	0	0	0	0
	1	0	0	0	1
	0	0	1	0	1
	1	0	0	2	3
	MAY	JUN	JUL	AUG	
	0	3	0	0	3
	0	0	0	0	0
	3	0	1	0	4
	2	0	1	0	3
	SEP	OCT	NOV	DEC	
	0	1	0	1	2
	0	0	3	0	3
	2	0	0	0	2
	0	0	1	1	2
	(T-5)	(T-4)	(T-7)	(T-8)	(24)
					
1973	1974	1975	1976		

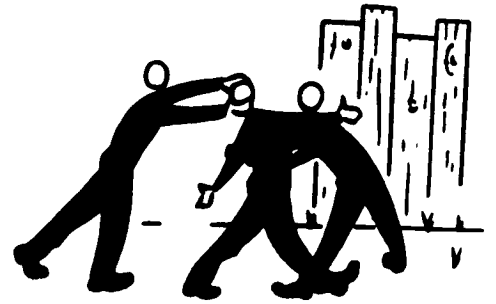
PURSE-SNATCHING with force



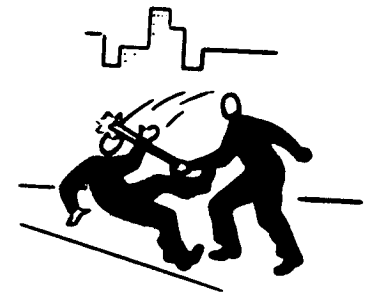
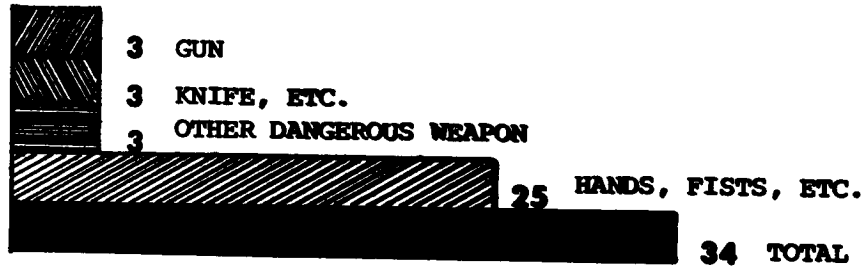
MUGGING



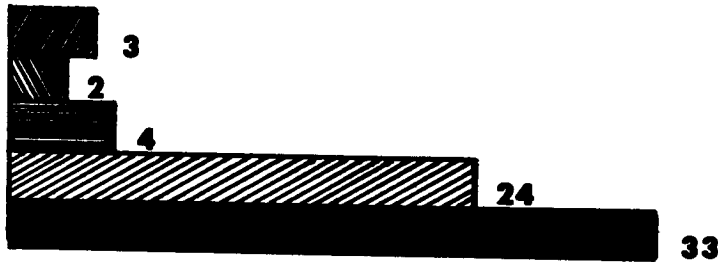
FELONIOUS ASSAULTS



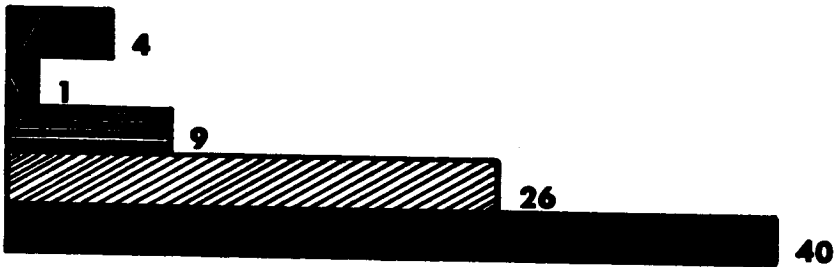
1973



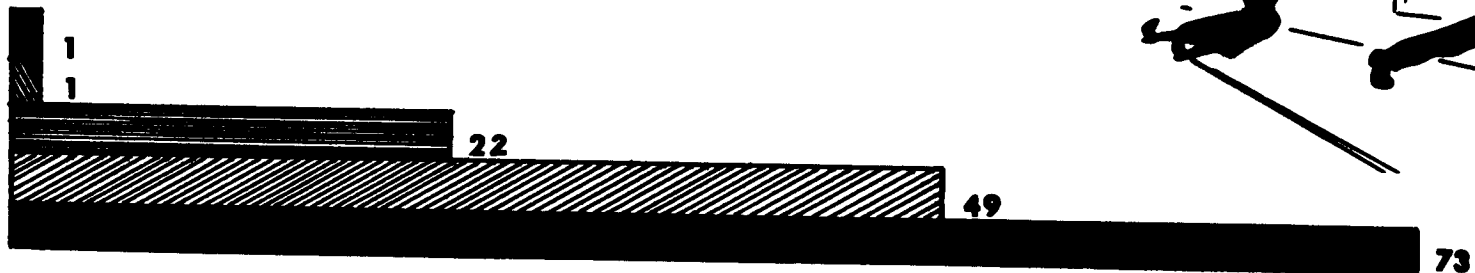
1974



1975

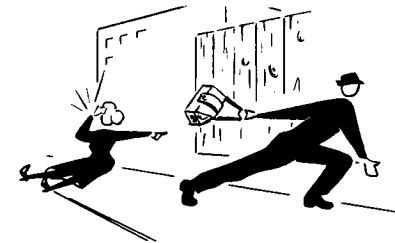


1976





ARREST



UNIFORM CLASSIFICATION OF OFFENSES	ARREST-1973			ARREST-1974			ARREST-1975			ARREST-1976		
	JUV	ADULT	TOTAL	JUV	ADULT	TOTAL	JUV	ADULT	TOTAL	JUV	ADULT	TOTAL
1a CRIMINAL HOMICIDE	-	-	-	-	-	-	-	1	1	-	1	1
b MANSL BY NEG	-	-	-	-	-	-	-	-	-	-	1	1
2 FORCIBLE RAPE	-	1	1	-	-	-	-	-	-	-	1	1
3 ROBBERY	-	-	-	-	-	-	-	3	3	-	-	-
4 AGGR ASSAULT	1	4	5	-	10	10	3	17	20	6	22	28
5 BURGLARY - B&E	7	7	14	18	18	36	12	20	32	14	26	40
6 LARCENY-THEFT EX AUTO	2	11	13	18	34	52	56	116	172	89	136	225
7 AUTO THEFT	1	-	1	1	6	7	4	4	8	3	7	10
8 OTHER ASSAULTS	-	8	8	2	24	26	1	25	26	6	46	52
TOTAL-PART I CLASSES	11	31	42	39	92	131	76	186	262	118	240	358
9 ARSON	-	-	-	-	-	-	-	-	-	-	3	3
10 FORGERY & COUNTERFT	1	4	5	-	10	10	1	5	6	-	3	3
11 FRAUD	-	1	1	-	9	9	-	35	35	1	15	16
12 EMBEZZLEMENT	-	-	-	-	-	-	-	-	-	-	1	1
13 STOLEN PROPERTY	-	7	7	-	13	13	4	4	8	1	7	8
14 VANDALISM	2	1	3	10	9	19	5	9	14	21	30	51
15 WEAPONS; CARRY, POSS.	-	7	7	1	17	18	-	11	11	-	20	20
16 PROSTITUTION & VICE	-	-	-	-	-	-	-	-	-	-	-	-
17 SEX OFFENSES	-	3	3	-	1	1	-	1	1	-	-	-
18 NARCOTIC DRUG LAWS	8	24	32	9	19	28	6	46	52	15	31	46
19 GAMBLING	-	-	-	-	-	-	-	-	-	-	-	-
20 OFFENSE AGNST FAMILY	32	6	38	55	6	61	48	14	62	64	31	95
21 DRIVE UNDER INFLNCE	-	115	115	1	79	80	3	52	55	2	58	60
22 LIQUOR LAWS	1	1	2	-	-	-	-	-	-	-	-	-
23 DRUNKENNESS	23	489	512	31	597	628	22	449	471	30	550	580
24 DISORDERLY CONDUCT	-	1	1	-	-	-	-	-	-	-	1	1
25 VAGRANCY	6	-	6	-	-	-	-	-	-	-	-	-
26 ALL OTHER OFFENSES	29	236	265	22	276	298	8	332	340	27	382	409
TOTAL-PART II CLASS	102	895	997	129	1036	1165	97	959	1056	161	1132	1293
TOTAL-YEARLY ARRESTS	113	926	1040	168	1128	1296	173	1145	1318	279	1372	1651

ASSAULTS BY T-I-M-E

	AM	PM
12.01 TO 2.00	4	
2.01 TO 4.00	1	3
4.01 TO 6.00		2
6.01 TO 8.00		
8.01 TO 10.00	1	
10.01 TO 12.00	1	3

LAW ENFORCEMENT OFFICERS ASSAULTED •• BY TYPE OF WEAPON & ASSIGNMENT ••

	TOTAL	KNIFE CUTTING INST	OTHER DANGER WEAPON	HANDS FISTS FEET	1-MAN-VEH ALONE	OTHER		FIREARM	ASSAULTS CLEARED
						ALON	ASST		
RESPONDING TO DISTURBANCE CALLS (FAMILY QUARRELS, MAN WITH GUN, ETC.)	1			1	1				1
BURGLARIES IN PROGRESS OR PERSUING BURGLARY SUSPECTS									
ROBBERIES IN PROGRESS OR PERSUING ROBBERY SUSPECTS									
ATTEMPTING OTHER ARRESTS									
CIVIL DISORDER (RIOT, MASS DISOBEDIENCE)									
HANDLING, TRANSPORTING, CUSTODY OF PRISONERS	13		2	11		7	6		13
INVESTIGATING SUSPICIOUS PERSONS OR CIRCUMSTANCE									
AMBUSH - NO WARNING									
MENTALLY DERANGED PERSONS									
TRAFFIC PERSUITS AND STOPS	1			1		1			1
ALL OTHER									
--- TOTAL ---	15		2	13	1	8	6		15
ASSAULTS WITH PERSONAL INJURY	10		2	8					
ASSAULTS WITHOUT PERSONAL INJURY	5			5					

INVESTIGATION UNIT

Cases Reported

1973	341
1974	562
1975	862
1976	902

Actual Offenses

1973	328
1974	503
1975	814
1976	870

Number Unfounded

1973	13
1974	61
1975	48
1976	32

Cleared By Arrest

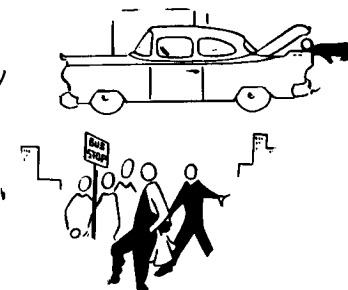
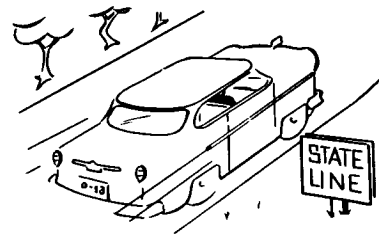
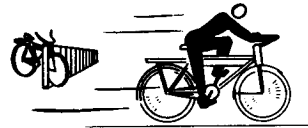
1973	52
1974	197
1975	344
1976	400

OFFENSES BY CLASS WITH VALUE

CLASSIFICATION		NUMBER OF ACTUAL OFFENSES	VALUE OF PROPERTY STOLEN
1.	MURDER	TOTAL	*
2.	FORCIBLE RAPE	TOTAL	3*
3.	ROBBERY		
	(A) HIGHWAY (STREETS, ALLEYS, ETC.)	1	295
	(B) COMMERCIAL HOUSE (EXCEPT C,D,F)	1	203
	(C) GAS, SERVICE STATION		
	(D) CHAIN STORE	1	300
	(E) RESIDENCE (ANYWHERE ON PREMISES)		
	(F) BANK		
	(G) MISCELLANEOUS	5	1,486
	TOTAL ROBBERY	8*	2,284*
5.	BREAKING AND ENTERING		
	(A) RESIDENCE (DWELLING)		
	(1) NIGHT (6PM-6AM)	38	5,903
	(2) DAY (6AM-6PM)	25	6,294
	(3) UNKNOWN	41	9,307
	(B) NONRESIDENCE (STORE, OFFICE, ETC.)		
	(1) NIGHT (6PM-6AM)	34	10,349
	(2) DAY (6AM-6PM)	6	606
	(3) UNKNOWN	21	3,856
	TOTAL BREAKING AND ENTERING	165*	36,315*
6.	LARCENY THEFT (EXCEPT VEHICLE)		
	(A) \$200 AND OVER	105	60,513
	(B) \$50 TO \$200	145	16,683
	(C) UNDER \$50	274	4,620
	TOTAL LARCENY	524*	81,816*
7.	MOTOR VEHICLE THEFT	TOTAL	19*
	TOTAL	719*	40,585*
	GRAND TOTAL		161,000*
6X	NATURE OF LARCENIES UNDER ITEM 6		
	(A) POCKET-PICKING		
	(B) PURSE-SNATCHING		
	(C) CARGO THEFTS (FROM STORAGE, TRANSPORT, DELIVERY)		
	(D) SHOPLIFTING	139	2,483
	(E) FROM AUTOS (EXCEPT F)	140	26,411
	(F) AUTO PARTS AND ACCESSORIES	56	4,828
	(G) BICYCLES	13	896
	(H) FROM BUILDINGS (EXCEPT C,D,AND I)	43	12,447
	(I) FROM ANY COIN OPERATED MACHINES (PARKING METERS, ETC.)	8	173
	(J) LIVESTOCK		
	(K) ALL OTHER	125	34,578
	TOTAL LARCENIES	524*	81,816*

STOLEN PROPERTY BY TYPE AND VALUE

TYPE OF PROPERTY	VALUE STOLEN	VALUE RECOVERED
(A) CURRENCY, NOTES, ETC	16,875	2,118
(B) JEWELRY AND PRECIOUS METALS	7,272	2,541
(C) FURS		
(D)	3,097	1,187
(E) LOCALLY STOLEN MOTOR VEHICLES	40,585	34,540
(F) OFFICE EQUIPMENT (TYPEWRITER, ADDING MACHINE, ETC)	554	
(G) TELEVISION, RADIOS, STEREO, ETC.	25,824	2,480
(H) FIREARMS	4,007	250
(I) HOUSEHOLD ITEMS (FURNITURE, WASHER, ETC.)	1,840	1,330
(J) CONSUMER ITEMS (LIQUOR, FOOD, CIGARETTES, ETC.)	807	1,074
(K) MISCELLANEOUS	60,139	11,641
TOTAL	161,000*	57,161



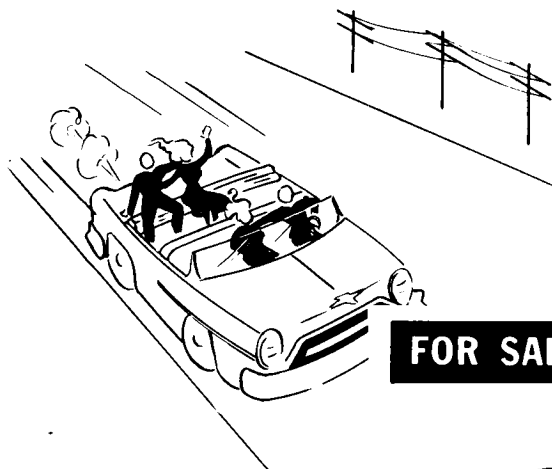
MOTOR VEHICLES RECOVERED

NUMBER OF ACTUAL OFFENSES VALUE OF PROPERTY STOLEN

MOTOR VEHICLES RECOVERED

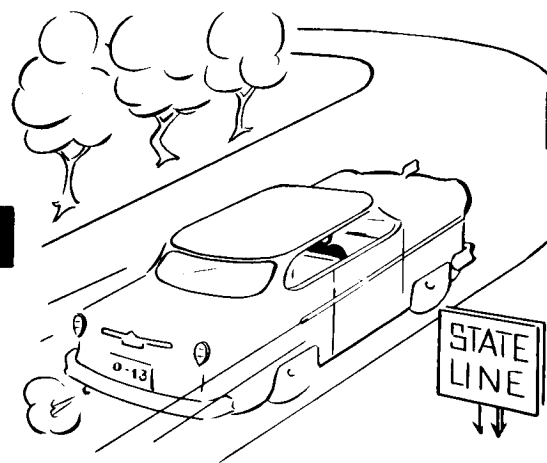
(A) NUMBER STOLEN LOCALLY AND RECOVERED LOCALLY	10	25,350
(B) NUMBER STOLEN LOCALLY AND RECOVERED BY OTHER JURISDICTION	5	9,490
(C) TOTAL LOCALLY STOLEN VEHICLES RECOVERED	15*	34,840*
(D) NUMBER STOLEN OUT OF JURISDICTION RECOVERED LOCALLY	9	29,800

FOR JOY RIDE

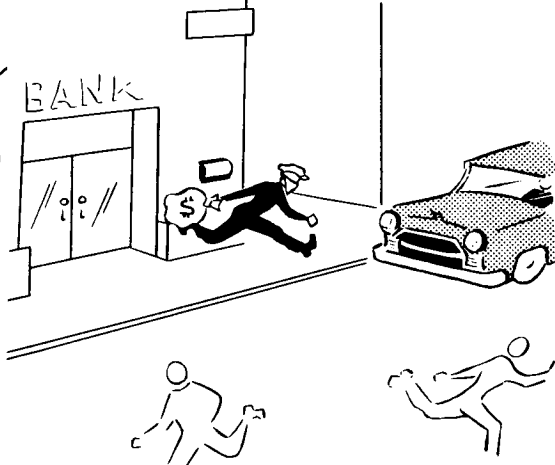


AUTO THEFT

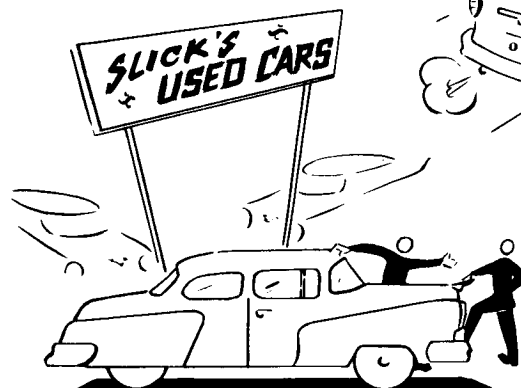
FOR TRANSPORTATION



FOR USE IN OTHER CRIME



FOR SALE OR STRIP



SPECIAL SERVICES DIV.

Persons Booked

1973	5947
1974	6725
1975	6773
1976	6755

Meals Served

1973	106746
1974	106728
1975	105274
1976	108711

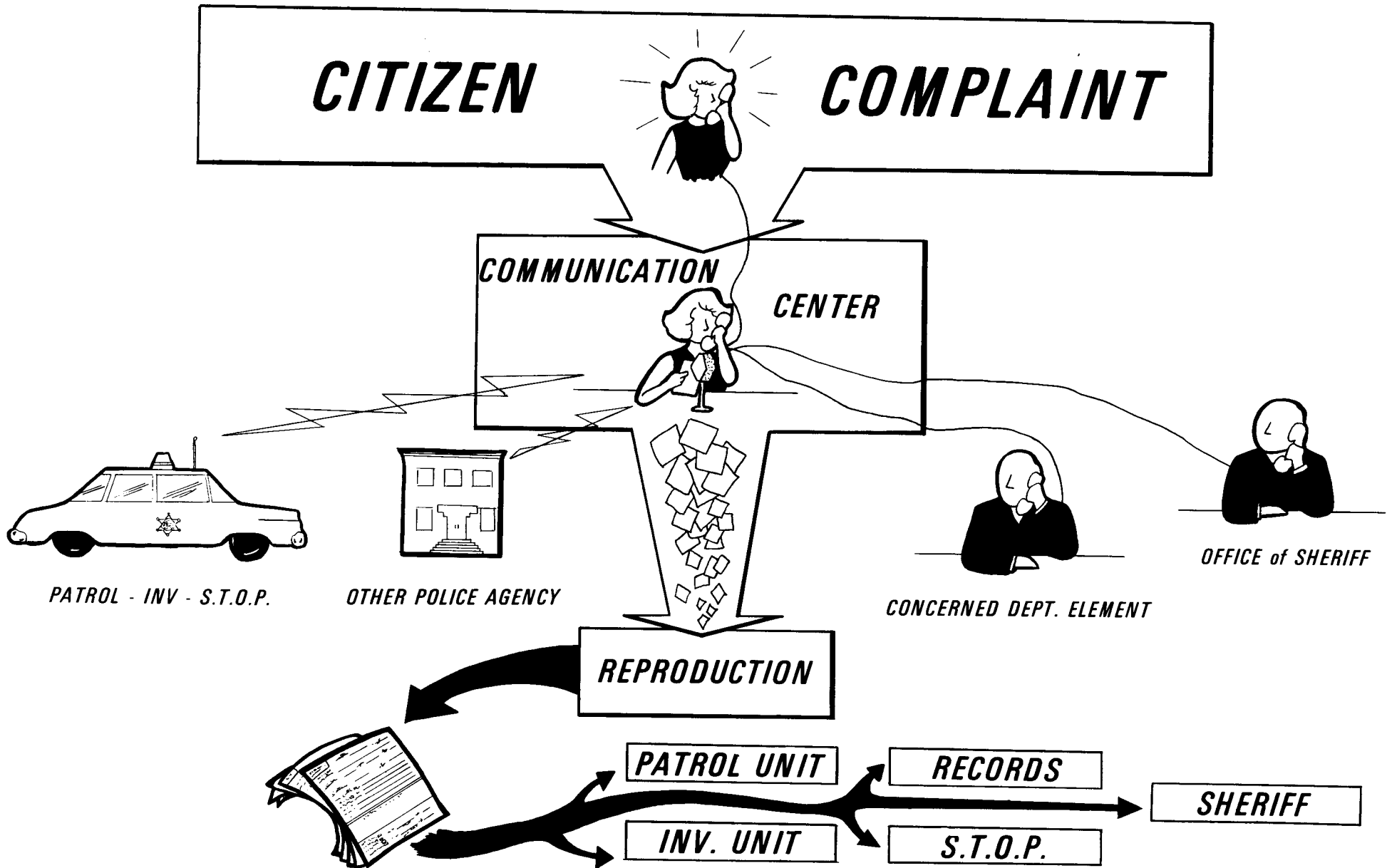
Visitors

1973	2638
1974	2155
1975	3083
1976	2465

Persons Printed

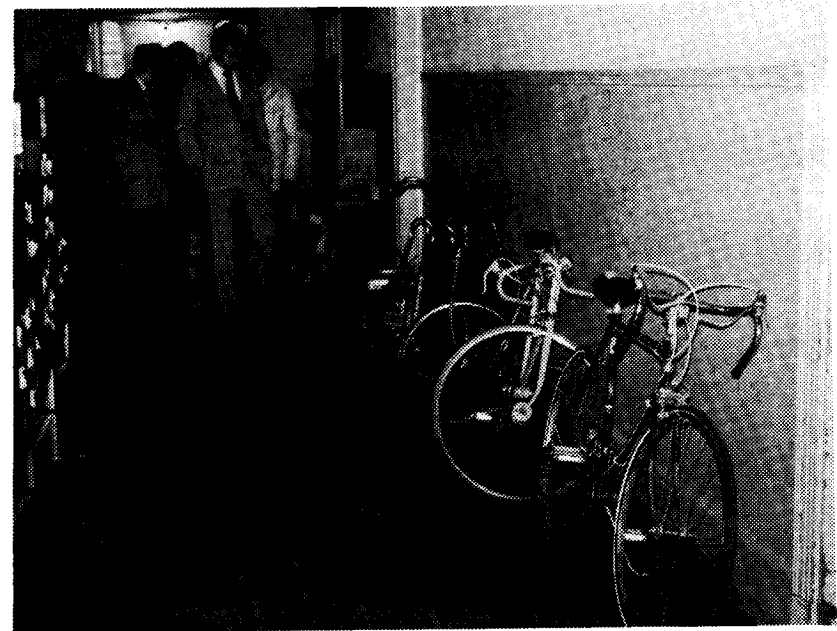
1973	278
1974	115
1975	1233
1976	1579

COMMUNICATIONS



ANOTHER FIRST!

For the first time in the history of the Cabell County Sheriff's Department an auction was held, selling all unclaimed, recovered property. This property consisted of items which had been recovered by deputies and the proper owners could not be located. Some items had been held by the department for over two years with efforts to determine the owners. Everything from car jacks, mufflers and CB antennae to clothing, clocks and bicycles was auctioned by Sheriff Ted T. Barr and County Commission President Ted Johnson and it netted the County \$734.25.



MOTOR VEHICLE LICENSE DIVISION



VIRGINIA MOSSBURG
SUPERVISOR



CAROLYN ELAM
ASST. SUPERVISOR

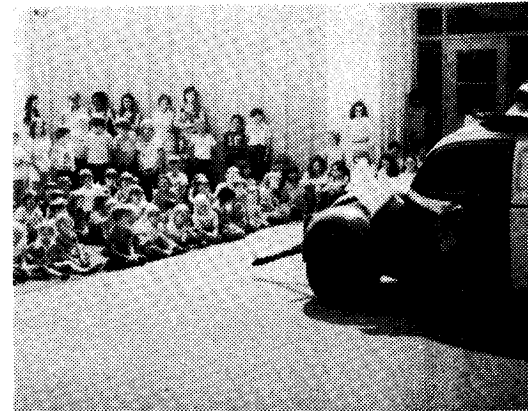
As a result of a recent legislative enactment all county sheriffs are now required to act as an agent for the Department of Motor Vehicles in the selling of renewals for Class "A" (passenger) and Class "G" (motorcycle) licenses. All initial issues, as before must be handled through DMV in Charleston. Monies were collected and disbursed to DMV and the county for the Six-Month Period as indicated.

MONTH	MONIES TO DMV	TO COUNTY
July	21,422.00	1,018.00
August	27,344.00	1,145.00
September	26,358.00	1,094.00
October	11,484.00	473.00
November	10,835.00	445.00
December	6,676.00	274.00
Total	104,119.00	4,444.00

Community Concern .. !



As exemplified in the past, the Cabell County Sheriff's Department continues to make community involvement a primary concern in daily operations. An important factor in the success of any law enforcement effort is a sound working relationship with the public at large. We feel we have such an arrangement within our community and that these mutual endeavors will ultimately lead to increased services and a reduction in crime for the residents of Cabell County.



S.T.O.P.

REPORTS

JANUARY	195
FEBRUARY	177
MARCH	264
APRIL	214
MAY	261
JUNE	231
JULY	246
AUGUST	284
SEPTEMBER	254
OCTOBER	268
NOVEMBER	280
DECEMBER	212

Medical Assists

Barboursville Fire Department....	9
Barboursville Police Department..	15
Milton Fire Department.....	4
Milton Police Department.....	13
Ohio River Rd. Fire Department...	4
Culloden Fire Department.....	1
Huntington Police Department.....	210
W.Va. State Police Department....	61

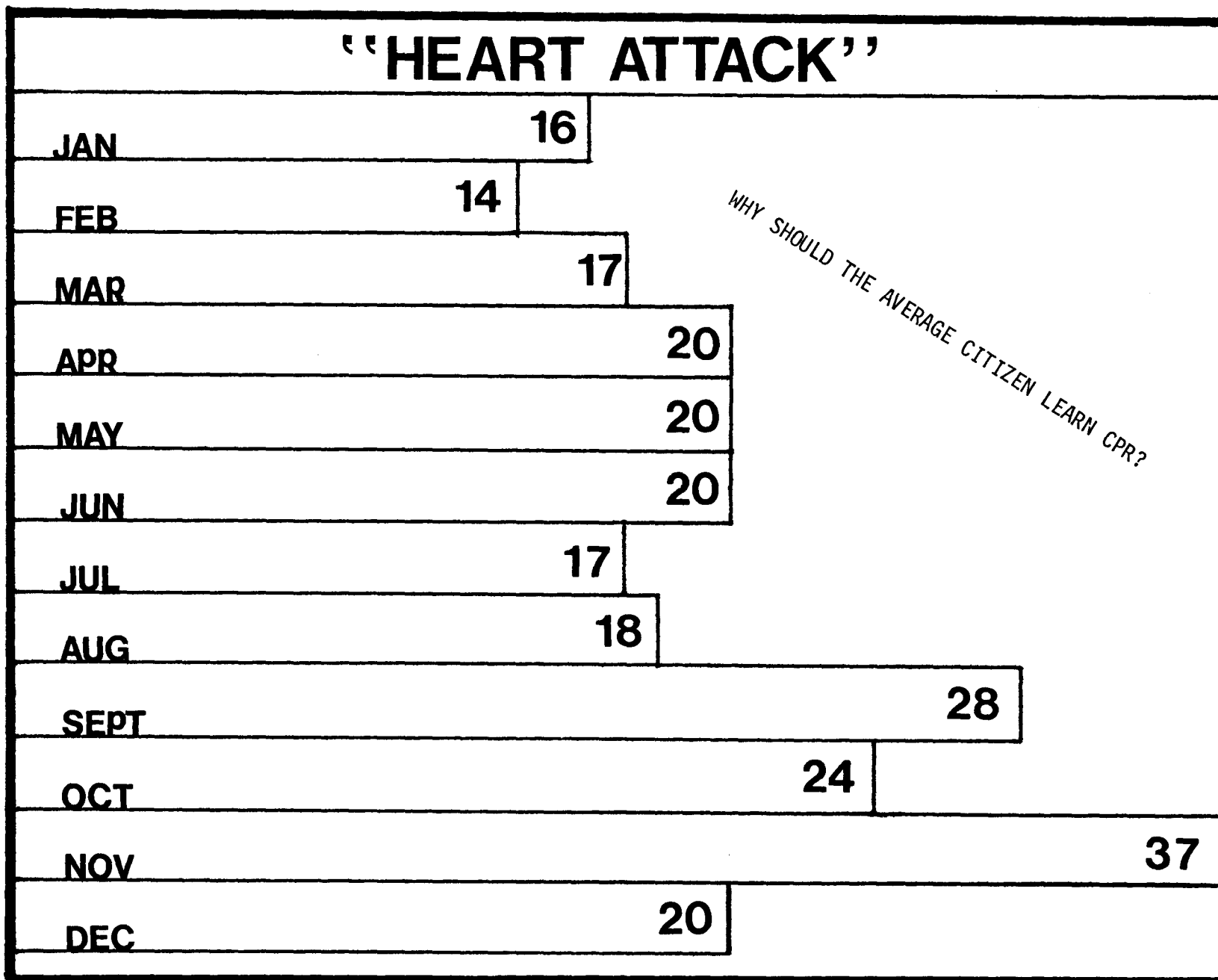
CALLS

Source	Day Of Week
RADIC 596	MONDAY457
PHONE 2120	TUESDAY.....413
TELETYPE -	WEDNESDAY.....397
ON VIEW 141	THURSDAY.....372
OTHER 20	FRIDAY.....371
	SATURDAY.....424
	SUNDAY 443

BY SHIFT

FIRST SHIFT.....	1107
SECOND SHIFT.....	1087
THIRD SHIFT.....	683

Over 650,000 people in the United States die of heart attacks every year. About 350,000 die before receiving medical treatment of any kind. That means almost 1,800 people per day die of heart attacks, more than the total amount of deaths caused by cancer, accidents and all other causes combined. It has been conservatively estimated that at least 100,000 of these deaths (more than 300 per day) could be prevented if someone acted immediately. In addition to the heart attack victim, a person whose heart and respiration have stopped due to drowning, suffocation, electrocution or other accidents, may also be saved by the immediate implementation of cardiopulmonary resuscitation (CPR).



Law Enforcement Code of Ethics

As a Law Enforcement Officer, my fundamental duty is to serve mankind; to safeguard lives and property; to protect the innocent against deception, the weak against oppression or intimidation, and the peaceful against violence or disorder; and to respect the Constitutional rights of all men to liberty, equality and justice.

I will keep my private life unsullied as an example to all; maintain courageous calm in the face of danger, scorn, or ridicule; develop self-restraint; and be constantly mindful of the welfare of others. Honest in thought and deed in both my personal and official life, I will be exemplary in obeying the laws of the land and the regulations of my department. Whatever I see or hear of a confidential nature or that is confided to me in my official capacity will be kept ever secret unless revelation is necessary in the performance of my duty.

I will never act officiously or permit personal feelings, prejudices, animosities or friendships to influence my decisions. With no compromise for crime and with relentless prosecution of criminals, I will enforce the law courteously and appropriately without fear or favor, malice or ill will, never employing unnecessary force or violence and never accepting gratuities.

I recognize the badge of my office as a symbol of public faith, and I accept it as a public trust to be held so long as I am true to the ethics of the police service. I will constantly strive to achieve these objectives and ideals, dedicating myself before God to my chosen profession . . . law enforcement.

PUBLIC

#1

SERVANTS